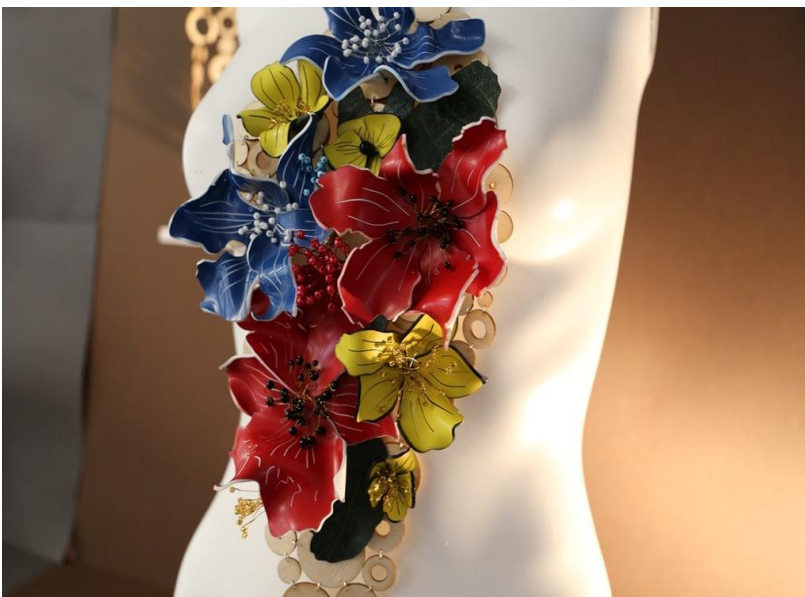


# 3D DESIGN IN THE SIXTH FORM

---

## AN INTRODUCTION TO THE SUBJECT

This department at Walthamstow Hall provides many opportunities for students to develop their understanding of a range of materials and processes with creativity at the core of the curriculum. We offer the opportunity to study Architectural design, Ceramics and Jewellery and Body Adornment at GCSE and A Level.



## A LEVEL

We are into the third year of being able to offer a two year linear A Level (Art and Design) 3D Design from our recreated studio environment.

At this level students may either continue to sustain a broad approach by working in a range of disciplines appropriate to their intentions, or focus fully on either Architecture, Ceramics or Jewellery Design. Drawing in all its forms is an essential skill in design that must be sustained and refined throughout the course.

The course has two units: Coursework, which consists of a personal Investigation in response to a theme(s) with a supporting written component, and an externally-set controlled assignment.

An experimental approach to initial ideas and manipulating materials is the focus of work in the first term of Year 12. From here students will begin to use independent research in a chosen area of Art and Design to inform their own work. A consistent approach to work is essential both in and out of school and students will be expected to begin to develop growing ownership over their design ideas.



Whilst students must begin to consider both the form and function of objects and spaces far more rigorously, an experimental and imaginative approach to their studies is essential. Students are encouraged to visit galleries and exhibitions independently in order to increase the breadth of their understanding in the subject. Workshops and gallery visits will be arranged in response to the individual needs of each group of students as the course covers such a wide range of design disciplines

## WHAT PREVIOUS STUDY IS REQUIRED?

Students wishing to be considered for the A Level course should have successfully completed a GCSE in 3D Design and gained at least a grade 6. Students with a 5 or above in any Art-based course will also be considered by submitting a portfolio of work that shows a strong desire or history of working in three Dimensions.

## 3D DESIGN A LEVEL RESULTS 2017 - 2019

GRADE	A*		A	B	C
3D Design	2019			67%	33%
	2018	100%			
	2017	33%	33%	33%	